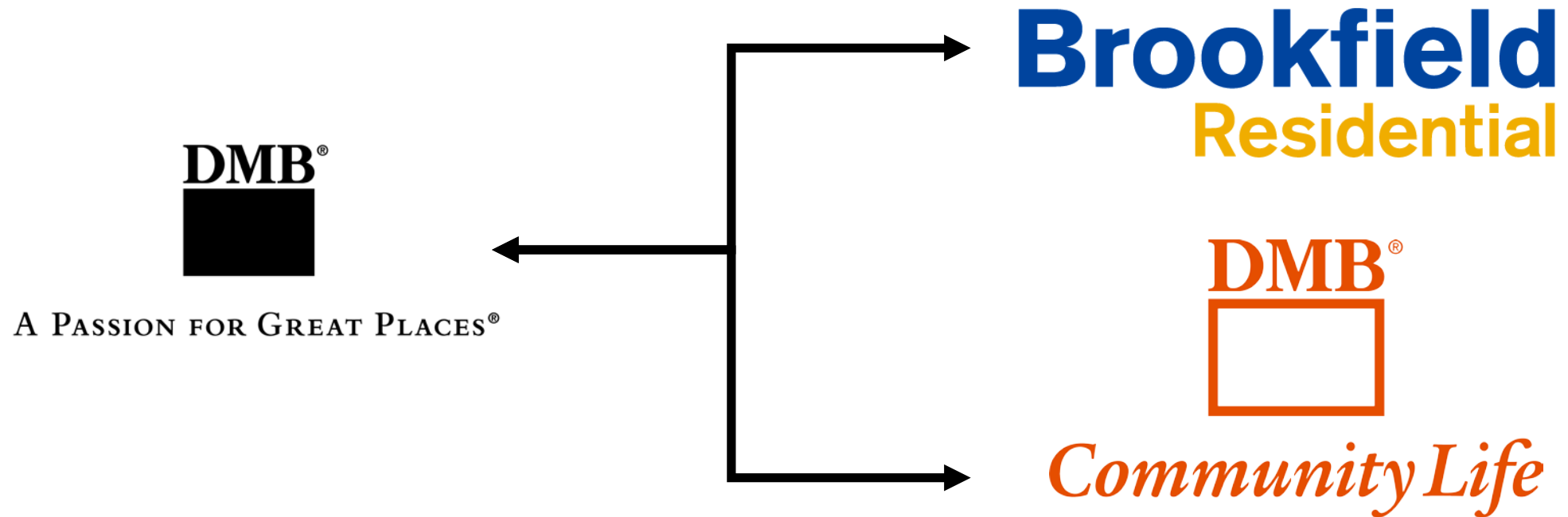


A wide-angle photograph of a modern golf course clubhouse with large glass windows and a flat roof. The clubhouse is surrounded by a lush green lawn, palm trees, and other vegetation. In the foreground, there is a small stream with large rocks and a waterfall. A yellow rectangular box is overlaid on the center of the image, containing the text "Developer's Update" and "February 1, 2018".

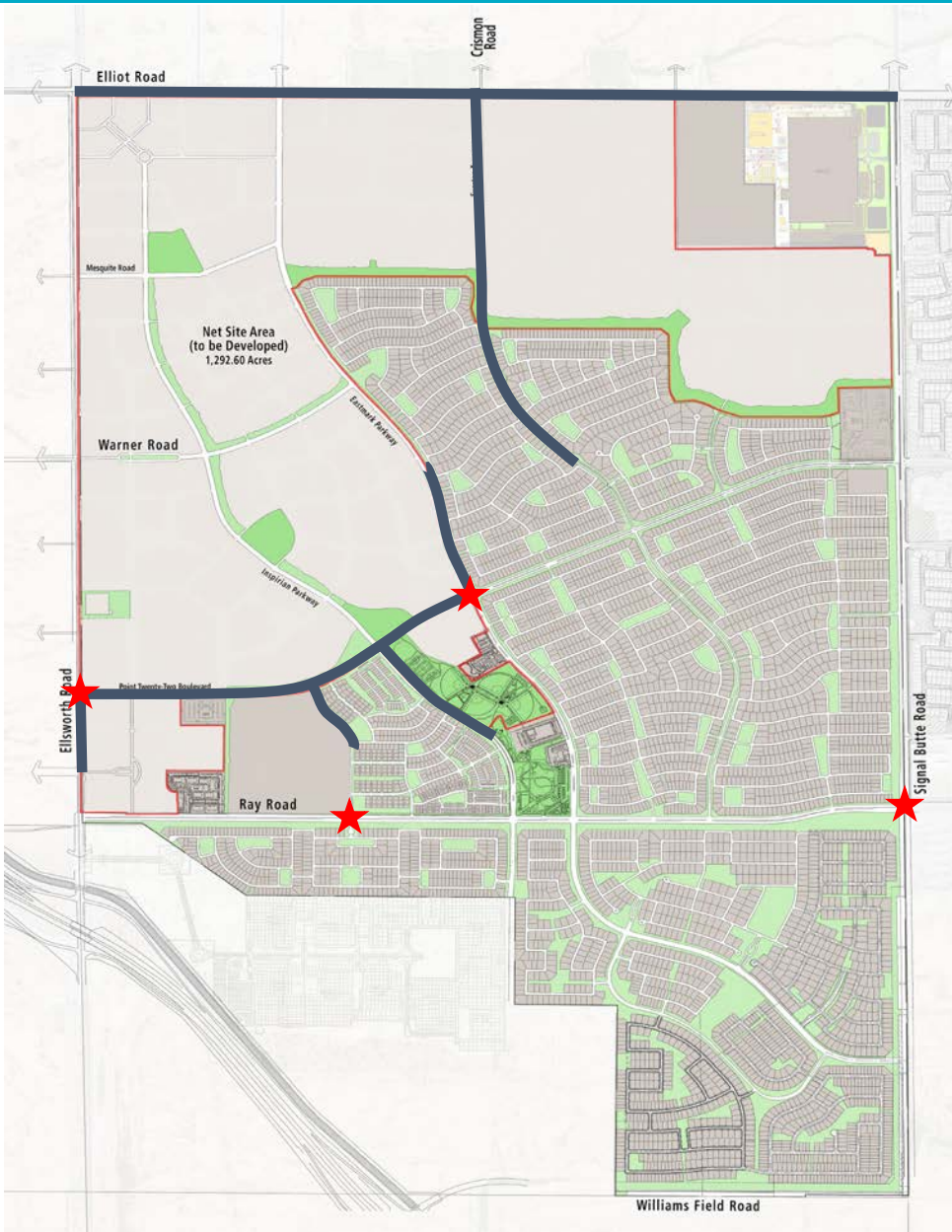
Developer's Update

February 1, 2018

Project Management Transition



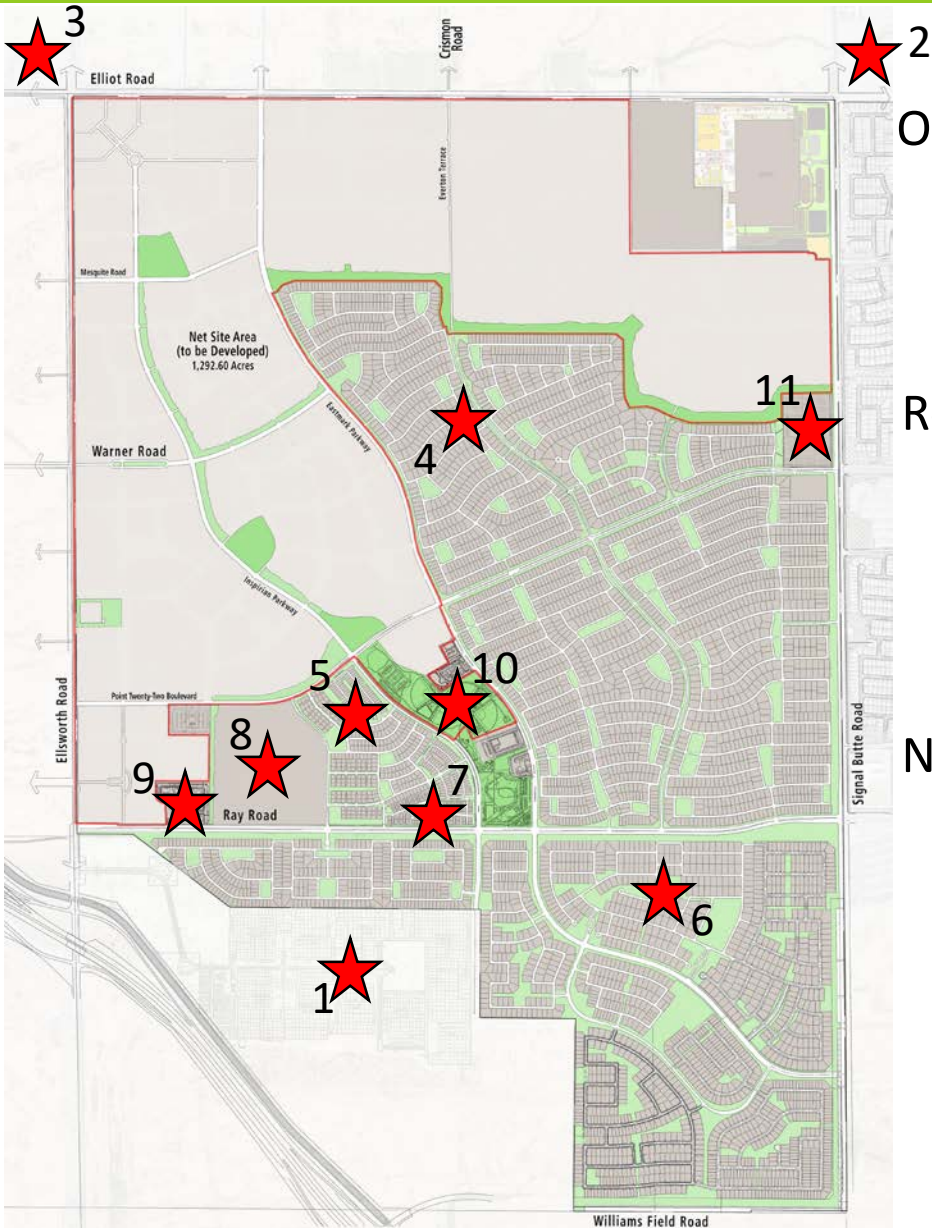
2018 Roadway Projects



Roadway Projects Under Construction and/or Complete in 2018

- Point 22 Blvd from Eastmark Pkwy to Ellsworth Rd
- Inspirian Pkwy from Ray Rd to Point 22 Blvd
- Copernicus from Ray Rd to Point 22 Blvd
- Eastmark Pkwy north of Point 22 Blvd (approx. ½ mi)
- Everton Terrace from Point 22 Blvd to Elliot Rd
- Ellsworth Rd from Ray Rd to Point 22 Blvd
- Elliot Rd from Ellsworth to Signal Butte (City of Mesa)
- Traffic Signals
 - * Ray Rd. & Copernicus
 - * Eastmark Pkwy & Point 22 Blvd
 - * Point 22 Blvd & Ellsworth Rd
 - * Signal Butte & Ray Rd

2018 Development Projects



Other Regional Projects

- 1 Cadence (Opening Q4 2018)
- 2 City of Mesa Water Treatment Plant (Complete Q3 2018)
- 3 Dignity Hospital (Opening 2018?)

Residential Projects

- 4 +/-1000 residential lots north of Point 22 (Start Q1 2018)
- 5 +/- 200 residential lots south of Point 22, west of Inspirian (Open Q3 2018)
- 6 The Estates at Eastmark (Opening Q2 2018)
- 7 BB Living Townhomes (Opening Early 2019)

Non-Residential Projects

- 8 Queen Creek High School (Open Q3 2019)
- 9 The Premiere Apartments (Start Q4 2018)
- 10 The Eastmark Great Park (Start Q4 2018)
- 11 The Point at Eastmark (Start Q2 2019, Open Q4 2019)

4 +/-1000 residential lots north of Point 22 (Start Q1 2018)



5

+/- 200 residential lots south of Point 22, west of Inspirian
(Open Q3 2018)



8 Queen Creek High School (Open Q3 2019)



10 The Eastmark Great Park (Start Q4 2018)



PLAY STRUCTURE 1, 2, 3



MULTI-PURPOSE FIELD



DOG PARK W/ ARTIFICIAL TURF MOUNDS



BASEBALL STORAGE



FOOD TRUCK CORRIDOR



ALLEE



LARGE GROUP RAMADA



OFFICE & RESTROOM



BASEBALL FIELD



CONCRETE SIDEWALK



BASKETBALL COURTS



HA-HA



RAMADA STRUCTURE



VOLLEYBALL COURTS

RAISED TURF WITH BATTERED WALL

HA-HA

BASEBALL STORAGE

RAMADA STRUCTURE

VOLLEYBALL COURTS

Can you guess what's next
from the creative minds at
Eastmark?



Steadfast Farm at Eastmark

KEYNOTES

- A FARM BUILDINGS
- B FARM STORE
- C 3'-0" 2 RAIL FENCE
- D FIELD
- E HOOP STRUCTURE



A



B



C



D



E



STEADFAST FARM
— AT EASTMARK —

Thank You

